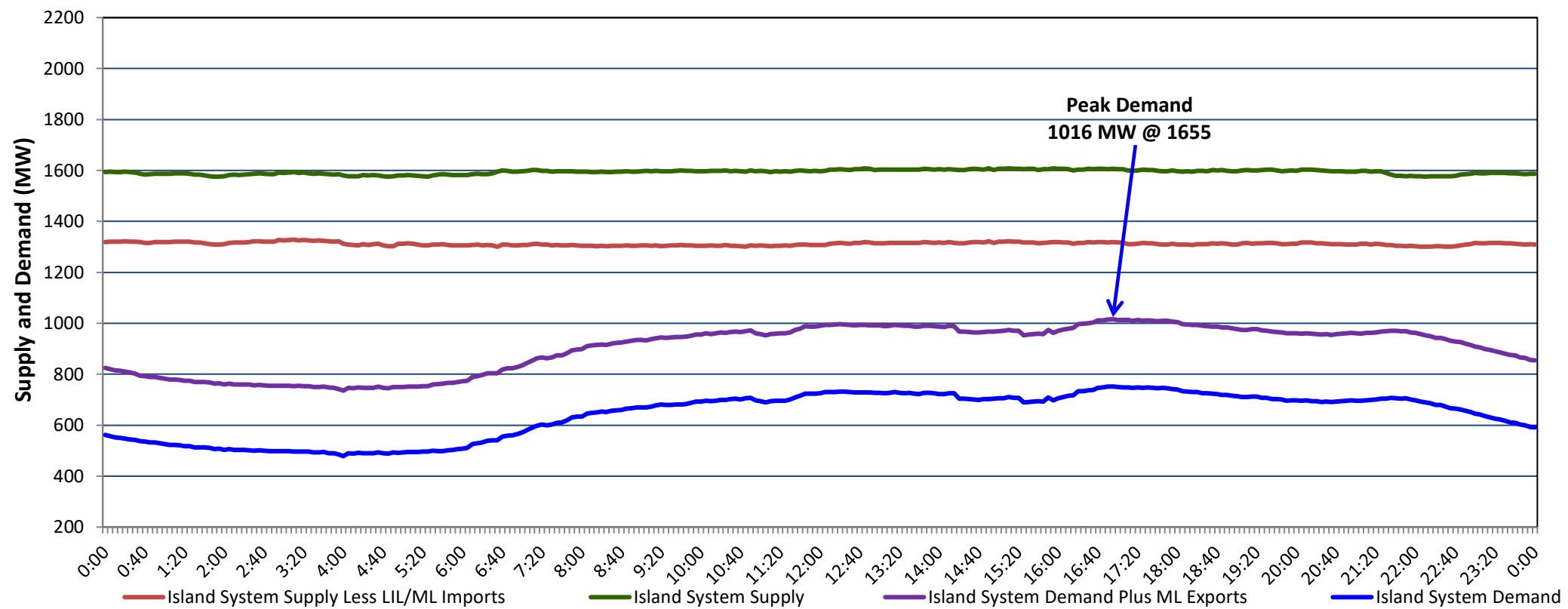


**Newfoundland Labrador Hydro (NLH)
Supply and Demand Status Report Filed Wednesday, July 19, 2023**

**Section 1
Island Interconnected System Supply, Demand & Exports
Actual 24 Hour System Performance For Tuesday, July 18, 2023**



Supply Notes For July 18, 2023

1,2

- A As of 0701 hours, March 06, 2023, Upper Salmon Unit unavailable (84 MW).
- B As of 0800 hours, May 21, 2023, Holyrood Unit 2 unavailable due to planned outage (170 MW).
- C As of 0903 hours, June 29, 2023, St. Anthony Diesel Plant available at 8.85 MW (9.7 MW).
- D As of 0856 hours, July 01, 2023, Holyrood Unit 3 available but not operating (150 MW).
- E As of 0800 hours, July 09, 2023, Holyrood Unit 1 unavailable due to planned outage (170 MW).
- F As of 0938 hours, July 09, 2023, Cat Arm Unit 1 unavailable due to planned outage (67 MW).
- G As of 2059 hours, July 13, 2023, Stephenville Gas Turbine unavailable (50 MW).

**Section 2
Island Interconnected Supply and Demand**

Wed, Jul 19, 2023	Island System Outlook ³	Seven-Day Forecast	Temperature (°C)		Island System Daily Peak Demand (MW)	
			Morning	Evening	Forecast	Adjusted ⁷
Available Island System Supply: ⁵	1,561 MW	Wednesday, July 19, 2023	21	23	1,030	1,030
NLH Island Generation: ^{4,8}	1,000 MW	Thursday, July 20, 2023	23	21	745	745
NLH Island Power Purchases: ⁶	110 MW	Friday, July 21, 2023	19	20	755	755
Other Island Generation:	210 MW	Saturday, July 22, 2023	20	18	740	740
ML/LIL Imports:	241 MW	Sunday, July 23, 2023	18	21	755	755
Current St. John's Temperature & Windchill:	20 °C	Monday, July 24, 2023	18	21	785	785
7-Day Island Peak Demand Forecast:	1,030 MW	Tuesday, July 25, 2023	17	20	770	770

Supply Notes For July 19, 2023

3

- Notes:
1. Generation outages for running and corrective maintenance are included. These are not unusual for power system operations. They generally do not impact customer supply. The power system operators schedule outages to system equipment whenever possible to coincide with periods when customer demands are low and sufficient supply reserves are available. However, from time to time equipment outages are necessary and reserves may be impacted.
 2. Due to the Island system having no synchronous connections to the larger North American grid, when there is a sudden loss of large generating units there may be a requirement for some customer's load to be interrupted for short periods to bring generation output equal to customer demand. This automatic action of power system protection, referred to as under frequency load shedding (UFLS), is necessary to ensure the integrity and reliability of system equipment. Under frequency events have typically occurred 5 to 8 times per year on the Island Interconnected System and the resultant customer load interruptions are generally less than 30 minutes. With the activation of the Maritime Link frequency controller during the winter of 2018, UFLS events have occurred less frequently.
 3. As of 0800 Hours.
 4. Gross output including station service at Holyrood (24.5 MW) and improved NLH hydraulic output due to water levels (35 MW).
 5. Gross output from all Island sources (including Note 4).
 6. NLH Island Power Purchases include: CBPP Co-Gen, Nalcor Exploits, Rattle Brook, Star Lake, Wind Generation and capacity assistance (when applicable).
 7. Adjusted for curtailable load, market activities and the impact of voltage reduction when applicable.
 8. Due to limitations inherent in the design of combustion turbines, the output of combustion turbines may be reduced in the event that ambient temperatures exceed the threshold

**Section 3
Island Peak Demand Information
Previous Day Actual Peak and Current Day Forecast Peak**

Tue, Jul 18, 2023	Actual Island Peak Demand ⁹	16:55	1,016 MW
Wed, Jul 19, 2023	Forecast Island Peak Demand		1,030 MW

Notes: 9. Island Demand / LIL / ML Exports (where applicable) is supplied by NLH generation and purchases, plus generation owned and operated by Newfoundland Power and Corner Brook Pulp & Paper (Deer Lake Power, DLP).